



# SAILING INSTRUCTIONS

## International Dragon Class

### GRAND PRIX d'AALSMEER 2020

Organising Authority:  
Westeinder Zeilwedstrijden (WZW)  
in association with Yachtclub Aalsmeer and the Dutch Dragon Association

#### 1 RULES

- 1.1 The regatta will be governed by the 'rules' as defined in the Racing Rules of Sailing.
- 1.2 VHF channel 72 will be used as intended by NoR rule 1.4

#### 2 NOTICES TO COMPETITORS

- 2.1 Notices to competitors will be posted on the official notice board(s) located near the entrance of the clubhouse.

#### 3 CHANGES TO SAILING INSTRUCTIONS

- 3.1 Any change to the sailing instructions (SI) will be posted before 09:00 hrs. on the day it will take effect, except that any change to the schedule of races will be posted by 20:00 hrs. on the day before it will take effect.

#### 4 SIGNALS MADE ASHORE

- 4.1 Signals made ashore will be displayed from the flagpole near the regatta office/harbour office.
- 4.2 When flag AP is displayed ashore, "1 minute" is replaced by "not less than 30 minutes" in the race signal AP.

#### 5 SCHEDULE OF RACES

##### 5.1

Day	Date	First warning signal Soling	First warning signal Dragon	Number of races
Saturday	March 28, 2020	-----	11:55	3
Sunday	March 29, 2020	-----	10:55	3
Saturday	April 11, 2020	-----	11:55	3
Sunday	April 12, 2020	-----	10:55	3
Monday	April 13, 2020	-----	10:55	3
Saturday	April 18, 2020	11:45	11:55	3
Sunday	April 19, 2020	10:45	10:55	3

- 5.2 An orange flag displayed on a race committee signal boat signifies that it is in position at the starting line.
- 5.3 To alert boats that a race or sequence of races will begin soon, the orange starting line flag will be displayed with one sound signal at least five minutes before a warning signal is made.

## **6 CLASS FLAG**

- 6.1 Class flag for the Dragon class will be: Yellow flag with "2".  
Class flag for the Soling will be: Purple flag with "1".

## **7 RACING AREAS**

- 7.1 Attachment A shows the location of the racing area. The racing area will be the "Grote Poel" of the Westeinderplassen.

## **8 THE COURSES**

- 8.1 The diagram in Attachment B shows the courses, including the order in which marks are to be passed, and the side on which each mark is to be left.
- 8.2 No later than the warning signal, the race committee signal boat will display the course sign.

## **9 MARKS**

- 9.1 Marks 1, 2S, 2P will be orange triangle buoys.  
Mark 1A will be an orange "skippyball".  
The starting marks will be a staff with a floating element displaying a red flag at the port end and the race committee signal boat at the starboard end.
- 9.2 New marks, as provided in SI 11.1, will be a yellow triangle buoy and a yellow "skippyball".
- 9.3 Course A,B,C: The finishing marks will be a staff with a floating element displaying a red flag with white square at the port end and a race committee boat at the starboard end.  
Course D,E,F: The finishing marks will be a staff with a floating element displaying a red flag at the starboard end and a race committee boat at the port end.
- 9.4 A race committee boat signalling a change of a leg of the course is a mark as provided in instruction 11.4

## **10 THE START**

- 10.1 The starting line will be between a staff displaying an orange flag on the committee boat at starboard and the course side of the port-end starting mark.
- 10.2 A boat starting later than 4 minutes after her starting signal will be scored Did Not Start without a hearing. This changes rule A4.

## **11 CHANGE OF THE POSITION OF THE NEXT MARK**

- 11.1 To change the next leg of the course, the race committee will lay a new mark (or move the finishing line) and remove the original mark as soon as practicable. When in a subsequent change a new mark is replaced, it will be replaced by an original mark.
- 11.2 In case of a minor course change, such at the discretion of the Race Committee, no signal will be given because the marks are visible at all times. In this case the marks in use at the time, will not be replaced. This changes RRS 33.
- 11.3 A major course change will be in accordance with RRS 33(a)(2).
- 11.4 Except at a gate, boats shall pass between the race committee boat signalling the change of the next leg and the nearby mark, leaving the mark to port and the race committee boat to starboard. This changes rule 28.

## **12 THE FINISH**

- 12.1 Course A,B,C: The finishing line will be between a staff displaying a blue flag on the committee boat at starboard end and the course side of the port-end finishing mark.  
Course D,E,F: The finishing line will be between a staff displaying a blue flag on the committee boat at port end and the course side of the starboard-end finishing mark.

### **13 PENALTY SYSTEM**

13.1 Rule 44.1 is changed so that the Two-Turns penalty is replaced by the One-Turn penalty.

### **14 TIME LIMITS**

14.1 Target time for each race is 45 minutes. Failure to meet the target time will be no grounds for redress. This changes rule 62.1(a).

14.2 If no boat has passed Mark 1 within 30 minutes the race will be abandoned.

14.3 Boats failing to finish within 15 minutes after the first boat sails the course and finishes, will be scored Did Not Finish without a hearing. This changes rules 35 and A4.1.

### **15 PROTEST AND REQUESTS FOR REDRESS**

15.1 Protest forms are available at the regatta office. Protests and requests for redress shall be delivered there within the appropriate time limit.

15.2 The protest time limit is 90 minutes after the last boat has finished the last race of the day or the race committee signals no more racing today, whichever is later. However on the last day of an event this time limit is 60 minutes.

15.3 Notices will be posted no later than 30 minutes of the protest time limit to inform competitors of hearings in which they are parties or named as witnesses. Hearings will be held in the protest room located at the ground floor of the clubhouse, beginning as soon as possible.

15.4 Notices of protests by the race committee or protest committee will be posted to inform boats under rule 61.1(b).

15.5 For the purpose of rule 64.3(b) the 'authority responsible' is the measurer appointed by the organizing authority.

15.6 Breaches of SI 13.2, 17, 20, 21, 22, 23 and attachment C will not be grounds for a protest or request for redress by a boat. This changes rules 60.1(a) and 60.1(b). Penalties for these breaches may be less than disqualification if the protest committee so decides.

15.7 On the last day of the regatta a request for reopening a hearing shall be delivered:

- (a) within the protest time limit if the party requesting reopening was informed of the decision on the previous day,
- (b) no later than 30 minutes after the party requesting reopening was informed of the decision on that day. This changes rule 66.

### **16 SCORING**

16.1 For each race weekend the following applies:

1 race shall be completed to constitute a series.

When fewer than 5 races have been completed, a boat's series score will be the total of her race scores.

When 5 or more races have been completed, a boat's series score will be the total of her race scores excluding her worst score.

16.2 There will be a prize for the overall winner of the Grand Prix d'Aalsmeer Series.

- ◆ If a boat did not compete in one or more completed races of the regatta, her score for that race / those races will be DNC.
- ◆ A boat's series score:
  - If 20 or more races have been completed, her 3 worst scores will be excluded.
  - If 15 or more races have been completed, her 2 worst scores will be excluded.
  - If 10 or more races have been completed, her worst score will be excluded.

### **17 SAFETY REGULATIONS**

17.1 A boat that retires from a race shall notify the race committee as soon as possible.

17.2 When flag Y is displayed ashore, rule 40 applies at all times while afloat. This changes the Part 4 Preamble.

## **18 EQUIPMENT AND MEASUREMENT CHECKS**

- 18.1 A boat or equipment may be inspected at any time for compliance with the class rules and sailing instructions. On the water, a boat can be instructed by a race committee measurer to proceed immediately to a designated area for inspection.

## **19 OFFICIAL BOATS**

Official boats will signal the flag of the WZW or the name of an associated yacht club or an orange flag with the letter C or R.

## **20 SUPPORT BOATS**

Team leaders, coaches and other support personnel shall stay outside areas where boats are racing from the time of the preparatory signal to start until all boats have finished or the race committee signals a postponement, general recall or abandonment.

## **21 TRASH DISPOSAL**

- 21.1 Trash may be placed aboard support or official boats.

## **22 HAUL-OUT RESTRICTIONS**

- 22.1 Keelboats shall not be hauled out between the races of a series, except with and according to the terms of prior written permission of the race committee.

## **23 DIVING EQUIPMENT AND PLASTIC POOLS**

- 23.1 Underwater breathing apparatus and plastic pools or their equivalent shall not be used around keelboats between the starting signal of the first race and the end of the series.

## **24 RADIO COMMUNICATION**

- 24.1 Except in an emergency, a boat shall neither make radio transmissions while racing nor receive radio communications not available to all boats. This restriction also applies to mobile telephones. The race committee may communicate relevant information to sailors. Electronic equipment other than timers, compasses and VHF permitted by the Class Rules shall not be carried on board, except for mobile telephones and the like, which shall be switched off while racing.

## **25 PRIZES**

- 25.1 For each series, prizes will be awarded to:  
Each member of the crews placing first, second and third.  
Further an overall prize in the Dragon class will be awarded for the three Grand Prix d'Aalsmeer series and for the runner up. The overall winner will receive the "Cor Groot wisselprijs" and will have this for one year. This price remains the property of the NDC.

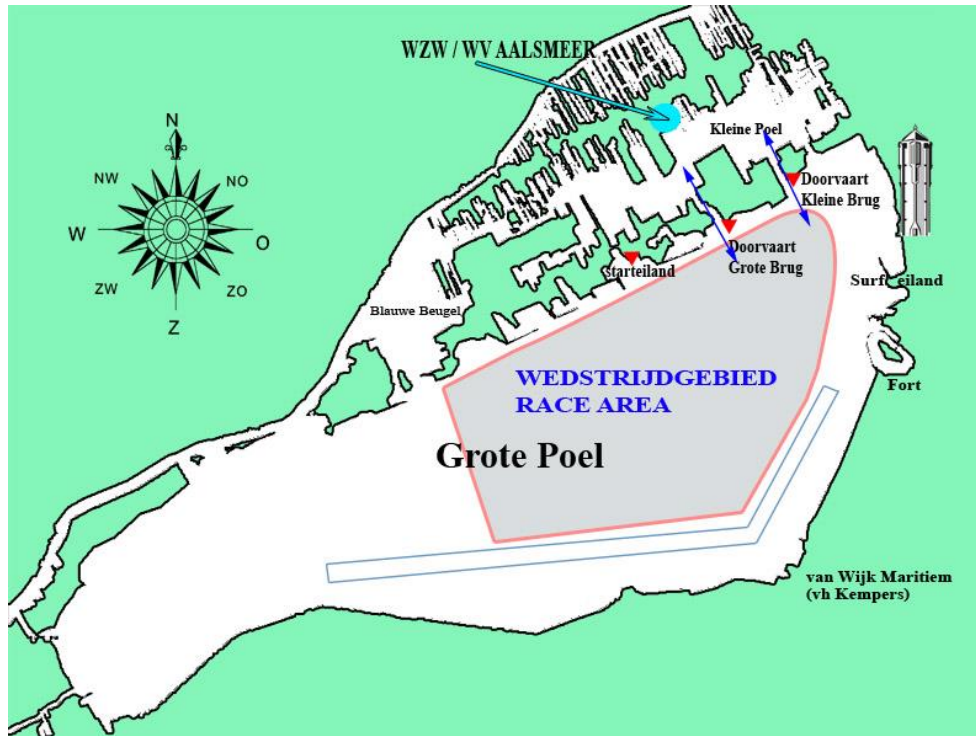
## **26 DISCLAIMER OF LIABILITY**

- 26.1 Competitors participate in the regatta entirely at their own risk. See rule 4, Decision to Race. The organizing authority will not accept any liability for material damage or personal injury or death sustained in conjunction with or prior to, during, or after the regatta.

## **27 INSURANCE**

- 27.1 Each participating boat shall be insured with valid third-party liability insurance with a minimum cover of € 1.500.000 per incident or the equivalent.

Attachment A



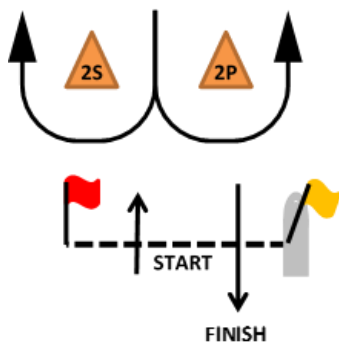
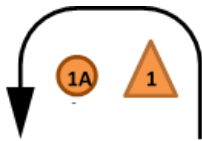
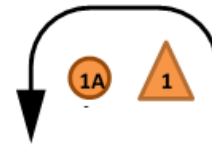
**ATTACHMENT B**

Course A: Start – 1 – 1A – 2P/2S – Finish  
 Course B: Start – 1 – 1A – 2P/2S – 1 – 1A – 2P/2S - Finish  
 Course C: Start – 1 – 1A – 2P/2S – 1 – 1A – 2P/2S – 1 – 1A – 2P/2S  
 - Finish

Marks 1, 1A and 2P to be left on port side. Mark 2S on starboard side.

The course sign is a black letter on a yellow background.

Please note that the marks of the gate will consist of two buoys, if one is missing the remaining buoy must be left to port.



Course D: Start – 1 – 1A – 2P/2S – 1 – 1A - Finish  
 Course E: Start – 1 – 1A – 2P/2S – 1 – 1A – 2P/2S – 1 – 1A - Finish  
 Course F: Start – 1 – 1A – 2P/2S – 1 – 1A – 2P/2S – 1 – 1A – 2P/2S  
 – 1 – 1A - Finish

Marks 1, 1A and 2P to be left on port side. Mark 2S on starboard side.

The course sign is a black letter on a yellow background.

Please note that the marks of the gate will consist of two buoys, if one is missing the remaining buoy must be left to port.

## **ATTACHMENT C**

### Sailing Conditions / Guidelines

#### Warning Signal

1. The warning signal should not be made if the wind speed in a substantial part of the racing area is below 5 knots or above 25 knots for a period of at least 5 minutes before the warning signal.
2. The warning signal should not be made if wind speeds above 25 knots are expected or have been forecast for the racing area during the time of the race.

#### Abandoning Races

1. A race should be abandoned if the wind speed drops below 2 knots in a substantial part of the racing area for a period of 5 minutes or more.
2. A race should be abandoned once the sustained wind speed reaches or exceeds 30 knots at any time before the first boat has crossed the finishing line.
3. A race should be abandoned if a wind shift of more than 25 degrees occurs before the first boat arrives at the first windward mark.
4. A race should be abandoned if it is thought that less than 30% of the Fleet will finish within the time limit.